

LemonTree Server Installation

Table Of Contents

- [Table Of Contents](#)
- [Installation](#)
 - [Prepare database comparison and merging](#)
 - [ODBC](#)
 - [OLEDB](#)
- [Additional Info](#)
- [Troubleshooting](#)
 - [Ensure that LemonTree Server is configured as an Application in the IIS Manager \(Start / Run / inetmgr.exe\)](#)
 - [Ensure that the respective Web.config has the correct path to the DBStub.exe defined](#)

Installation

1. Uninstall older versions of *LemonTree Server*
2. Execute the **LemonTreeServer.exe** setup. A link is automatically created on your desktop.

✔ Congratulations: *LemonTree Server* now works with .eap Files. Just double-click the Icon on your desktop.

To compare/merge databases the corresponding drivers need to be installed on the server machine.

🔗 Make sure to delete the browser cache on the client so the new *LemonTree Server* files are loaded. (*This is not necessary if caching is disabled on IIS*).

Prepare database comparison and merging

ODBC

1. Download and install <https://cdn.mysql.com//Downloads/Connector-ODBC/5.3/mysql-connector-odbc-5.3.10-winx64.msi>
2. Start *LemonTree*
3. Choose "ODBC" in the dropdown and copy the whole connection string (starting with Driver=) into the *Session Dialog*.
4. Press "Continue"

✔ Congratulations: You're now diffing/merging MySQL DBs.

OLEDB

For OLEDB you need to install Oracle-Database drivers.

⚠ This is highly sophisticated. Please contact your system administrator or oracle help page.

Additional Info

- *LemonTree Server* does not support "https".
- Don't close browser, *LemonTree Server* is not able to recover the old state.
- Depending on the connection *LemonTree Server* GUI responses can take some time (especially when dealing with big models and a lot of changes)
- ODBC connections to SQL Servers can only be established with the "SQL Server Native Client" data source type, not with the "SQL Server" data source type.

Troubleshooting

If *LemonTree Server* is not running check following points:

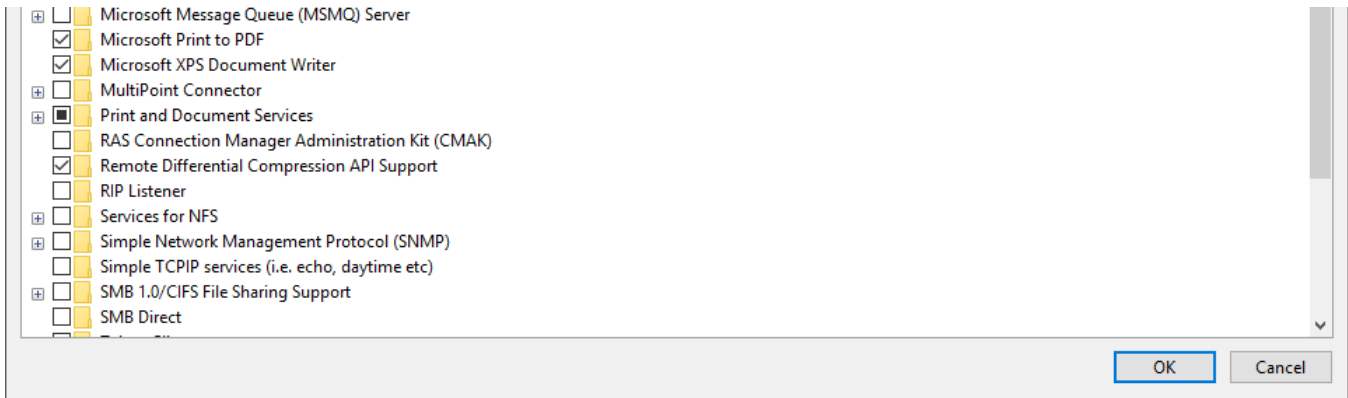
Ensure that the following **Windows features** are on.

Turn Windows features on or off

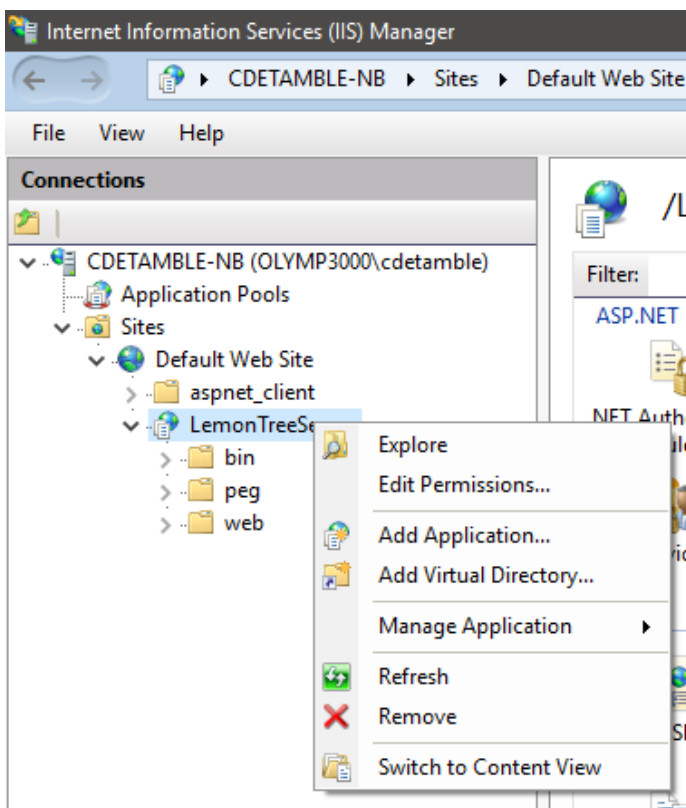


To turn a feature on, select its check box. To turn a feature off, clear its check box. A filled box means that only part of the feature is turned on.

- .NET Framework 3.5 (includes .NET 2.0 and 3.0)**
- Windows Communication Foundation HTTP Activation
- Windows Communication Foundation Non-HTTP Activation
- .NET Framework 4.7 Advanced Services**
- ASP.NET 4.7
- WCF Services**
- HTTP Activation
- Message Queuing (MSMQ) Activation
- Named Pipe Activation
- TCP Activation
- TCP Port Sharing
- Active Directory Lightweight Directory Services
- Containers
- Data Center Bridging
- Device Lockdown
- Guarded Host
- Hyper-V
- Internet Explorer 11
- Internet Information Services**
- FTP Server
- Web Management Tools**
- IIS 6 Management Compatibility
- IIS Management Console
- IIS Management Scripts and Tools
- IIS Management Service
- World Wide Web Services**
- Application Development Features**
- .NET Extensibility 3.5
- .NET Extensibility 4.7
- Application Initialization
- ASP
- ASP.NET 3.5
- ASP.NET 4.7
- CGI
- ISAPI Extensions
- ISAPI Filters
- Server-Side Includes
- WebSocket Protocol
- Common HTTP Features**
- Default Document
- Directory Browsing
- HTTP Errors
- HTTP Redirection
- Static Content
- WebDAV Publishing
- Health and Diagnostics**
- Custom Logging
- HTTP Logging
- Logging Tools
- ODBC Logging
- Request Monitor
- Tracing
- Performance Features**
- Dynamic Content Compression
- Static Content Compression
- Security**
- Basic Authentication
- Centralized SSL Certificate Support
- Client Certificate Mapping Authentication
- Digest Authentication
- IIS Client Certificate Mapping Authentication
- IP Security
- Request Filtering
- URL Authorization
- Windows Authentication
- Internet Information Services Hostable Web Core
- Legacy Components
- Media Features



Ensure that *LemonTree Server* is configured as an Application in the IIS Manager (Start / Run / inetmgr.exe)



```
C:\Windows\System32\inetsrv\Config\applicationHost.config - Notepad++
File Edit Search View Encoding Language Settings Tools Macro Run Plugins Window ?
applicationHost.config x
174 <sites>
175 <site name="Default Web Site" id="1">
176 <application path="/">
177 <virtualDirectory path="/" physicalPath="%SystemDrive%\inetpub\wwwroot" />
178 </application>
179 <application path="/LemonTreeServer" applicationPool="LemonTree">
180 <virtualDirectory path="/" physicalPath="C:\inetpub\wwwroot\LemonTreeServer" />
181 </application>
182
183 <bindings>
184 <binding protocol="http" bindingInformation="*:80:" />
185 </bindings>
186 </site>
eXtensible Markup Language file length : 79 053 lines : 987 Ln: 182 Col: 17 Sel: 0|0 Windows (CR LF) UTF-8 INS
```

Ensure that the respective Web.config has the correct path to the DBStub.exe defined

```
<appSettings>
<add key="UniqueMint.DbStubPath" value="C:\inetpub\wwwroot\LemonTreeServer\bin\LL.MDE.DataAccess.UniqueMint.Adapter.DBStub.exe"/>
<add key="UniqueMint.StorageBackend" value="InMemory"/>
<add key="UniqueMint.Feature.LostAndFound" value="true"/>
</appSettings>
```